

Bellsouth.net email setup

Bellsouth mail handler

Incomming: mail.bellsouth.net

Outgoing: mail.bellsouth.net

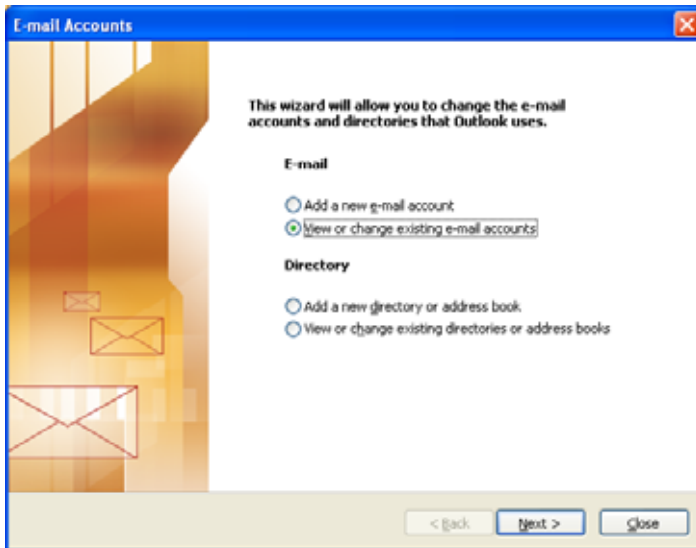
Email configuration for using mail.bellsouth.net pop/smpt

To change or add your email settings, follow these settings:

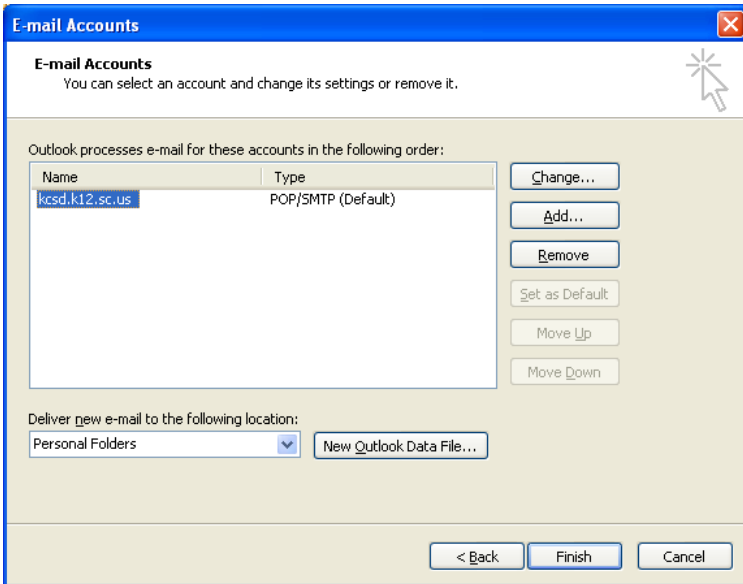
Open outlook.

Under the tools menu select E-mail Accounts

Select view or change existing e-mail accounts and click next



Select the account you want to modify and click change or add the new account



Your settings are below.

E-mail Accounts [Close]

Internet E-mail Settings (POP3) [Help]

Each of these settings are required to get your e-mail account working.

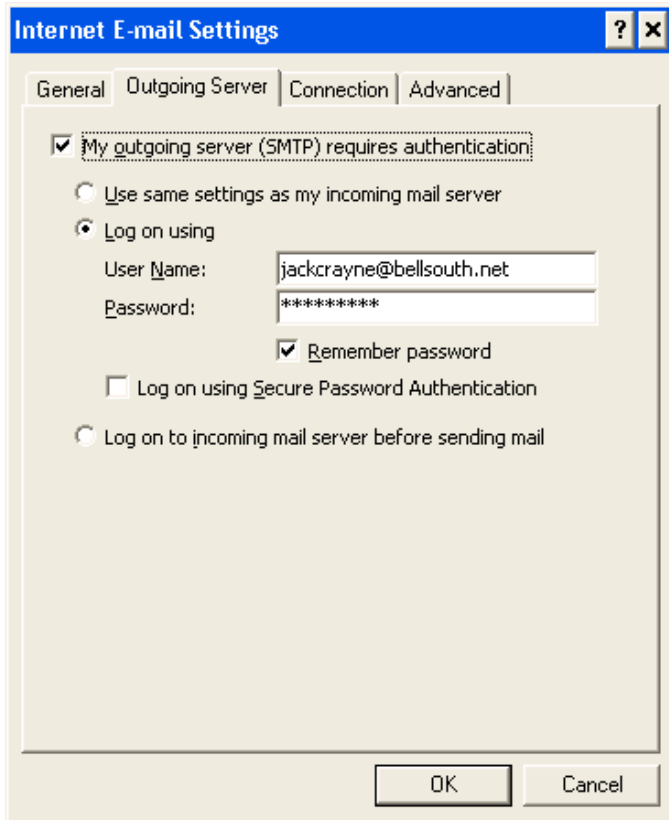
User Information	Server Information
Your Name: <input type="text" value="Jack Crayne"/>	Incoming mail server (POP3): <input type="text" value="mail.bellsouth.net"/>
E-mail Address: <input type="text" value="jackcrayne@bellsouth.net"/>	Outgoing mail server (SMTP): <input type="text" value="mail.bellsouth.net"/>

Logon Information	Test Settings
User Name: <input type="text" value="jackcrayne@bellsouth.net"/>	After filling out the information on this screen, we recommend you test your account by clicking the button below. (Requires network connection)
Password: <input type="password" value="*****"/>	
<input checked="" type="checkbox"/> Remember password	<input type="button" value="Test Account Settings ..."/>
<input type="checkbox"/> Log on using Secure Password Authentication (SPA)	<input type="button" value="More Settings ..."/>

< Back Next > Cancel

Click more settings

Here is what your internet e-mail settings should look like:



Internet E-mail Settings ? x

General | **Outgoing Server** | Connection | Advanced

Server Port Numbers

Incoming server (POP3): Use Defaults

This server requires an SSL-secured connection (SSL)

Outgoing server (SMTP):

This server requires an SSL-secured connection (SSL)

Server Timeouts

Short Long 1 minute

Delivery

Leave a copy of messages on the server

Remove from server after days

Remove from server when deleted from 'Deleted Items'

OK Cancel

